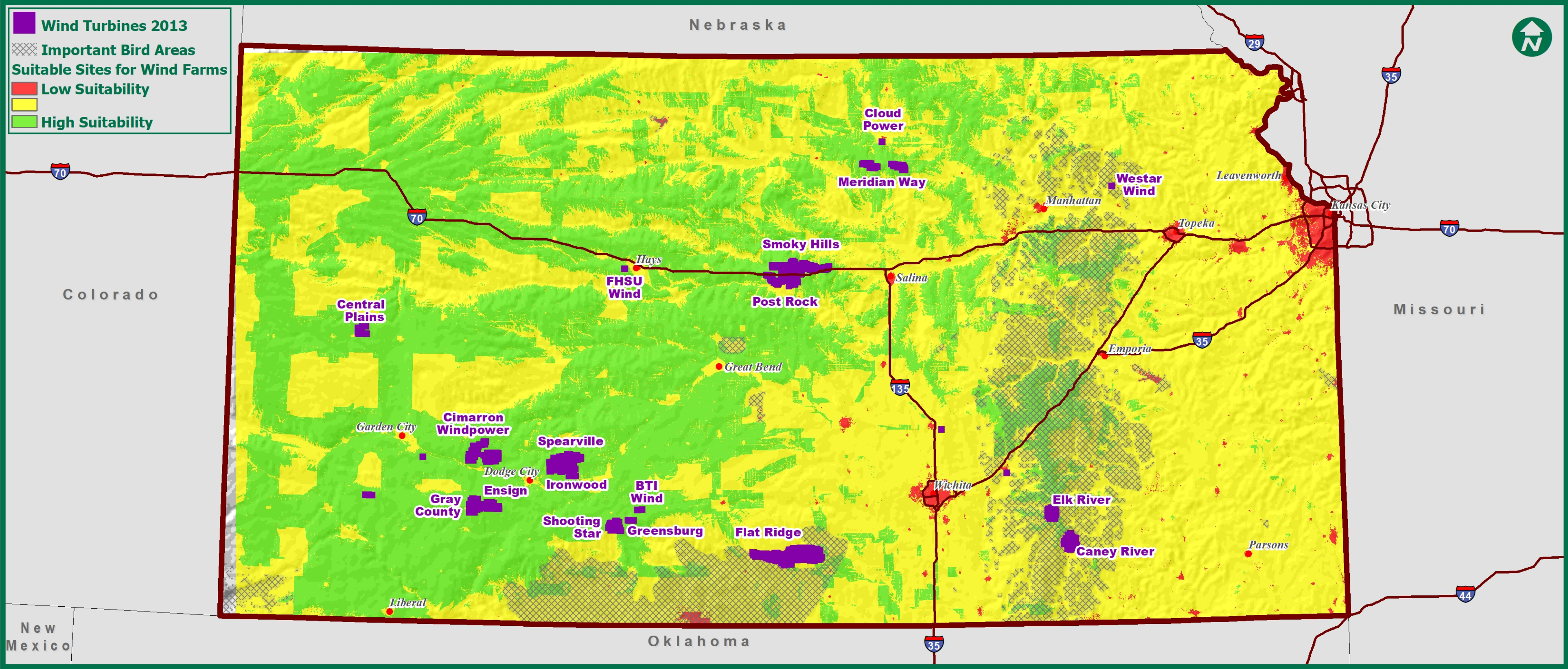


WIND TURBINE SUITABILITY IN KANSAS

Potential Sites for Wind Turbine Farms



Displayed are potential sites for wind turbines based upon Janke's *Multicriteria GIS Modeling of Wind and Solar Farms in Colorado* (2010). **CRITERIA:** wind speed at 50-m above the ground, accessibility to power transmission lines and roads, lack of forested or wetland areas, low population density, and not within a national or state park. Criteria were weighted 3:1 in favor of high wind speed. The National Audubon Society's important bird areas may also constrain suitability & those major areas are displayed. *Notice that many current wind farms are situated in highly suitable areas.*

Coordinate System: NAD 1983 2011 Kansas LCC
Projection: Lambert Conformal Conic
Datum: North American 1983 2011 // Units: meter
Data from Esri, USGS, KS GIS, Audubon,
Census Bureau & US DOE NREL
(National Renewable Energy Laboratory)
Map produced by Ms. Corea (NOV 2017)

1:1,800,000

