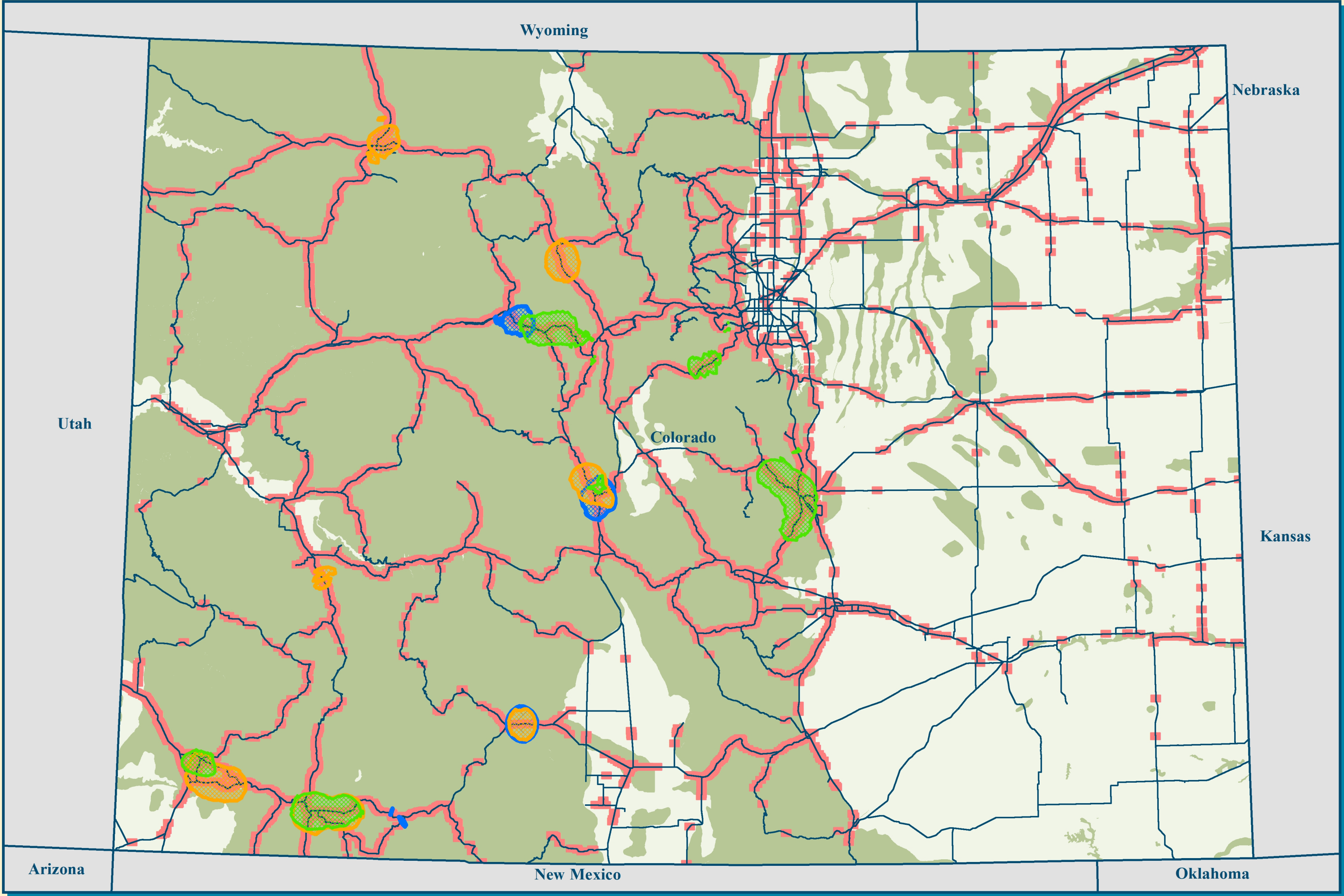


REDUCING WILDLIFE-VEHICLE COLLISIONS IN COLORADO

The Mule Deer (*Odocoileus hemionus*) -- Collisions With Vehicles From 2013 To 2016



Collisions between mule deer and vehicles have a significant economic cost as well as cause the loss of human life. Studying where and when these collisions occur can support the implementation of better policies to reduce these events.

There were 10,195 collisions between mule deer and vehicles from 2013 to 2016 on Colorado roads. Almost 90% of those were within known mule deer seasonal habitats. There are definite *hotspot* collision zones that change with the mule deer migratory patterns and 3,391 collisions were in those zones. *These zones can be targeted seasonally by CDOT for collision reduction activities.*

10,195 Collisions 2013-2016

Summer Collision Hotspots

Winter Collision Hotspots

Migration Collision Hotspots

Mule Deer Range & Corridors

Summer Months (May - Sept)

Winter Months (Oct - Apr)

Migration Months (Oct - Dec & Feb - Apr)

Data from Esri, Colorado Dept of Transportation (CDOT) & Colorado Parks and Wildlife (CPW Species Activity Data)

Coordinate System: NAD 1983 UTM Zone 13N
Projection: Transverse Mercator
Datum: North American 1983
Units: Meter



km 0 100 200 300 400 km