

Divestment/Investment

Showing commitment to climate issues with
investment in direct action

Chad King, PhD
Sustainability Coordinator



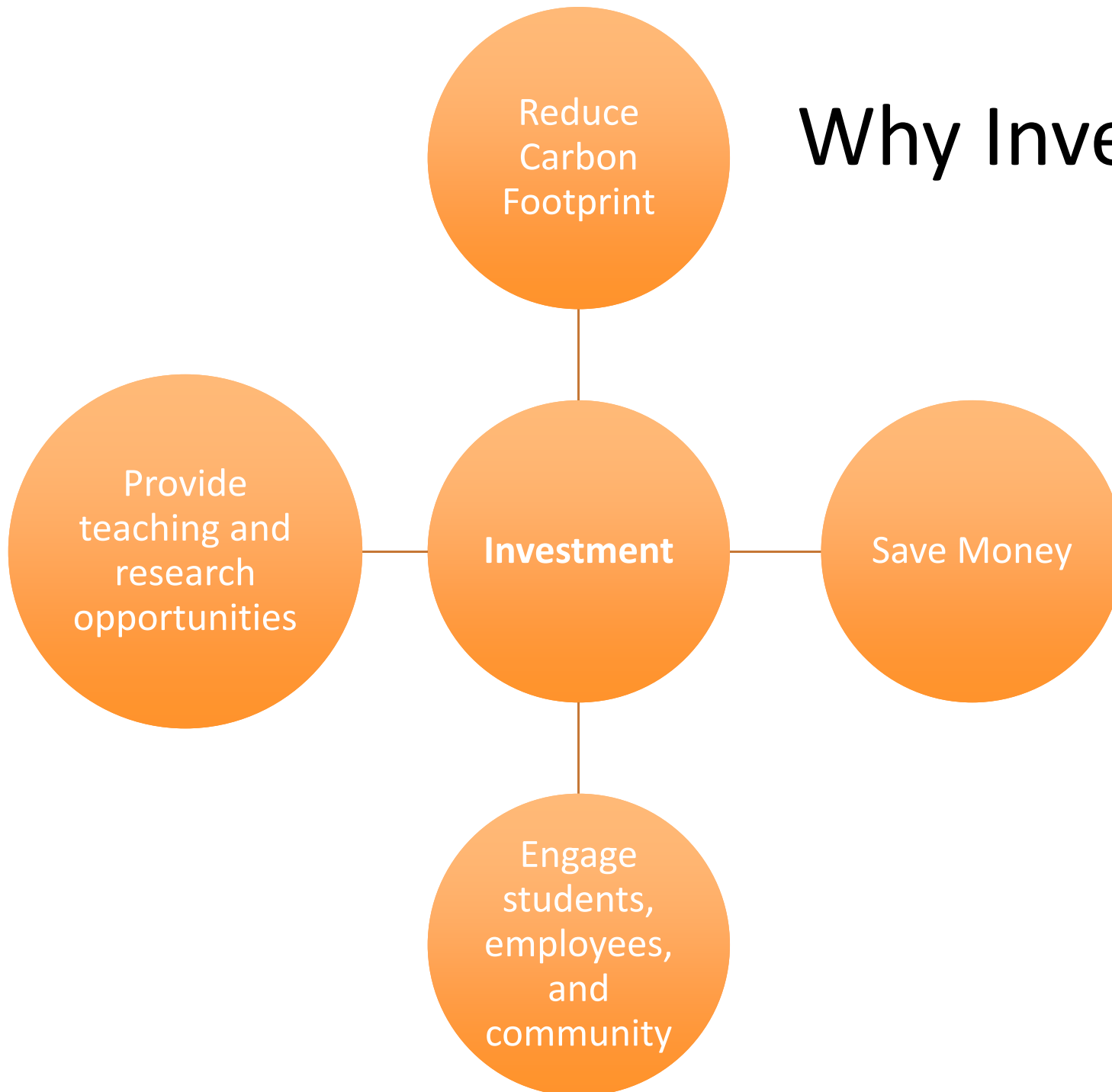
UNIVERSITY *of*
DENVER

CENTER FOR SUSTAINABILITY

Overview

- The Investment Opportunity
- Center for Sustainability description and impacts
- Potential for investing at DU
- Examples from other institutions

Why Invest?



Center for Sustainability

- One staff member
- Discretionary Budget of \$87,000
- Implement sustainability practices across campus
 - Composting, recycling, gardens, procurement, events, education
- Manage all bicycle programming for the University
- Report externally on sustainability practices
- Link practices to the curriculum
- Build community partnerships
- www.du.edu/sustainability

Impact:

Engagement, Operations, Curriculum

- 2,857 individuals in education or orientation programming
- 49 student employees, 6 interns
- 273 volunteers, 595 hours
- 910 participants in engagement activities
- 305 free bike services, \$6,075 value, 25 bikes rented per quarter, 30 bikes sold, 15 bikes donated, registered 150 bikes, impounded 56 abandoned bikes
- 79% waste diversion rate at hockey games, 2 E-waste drives (7,900 lbs), 461 lbs batteries recycled, 8 truckloads of move-out donations
- 9 Renter energy efficiency assessments performed, 8 student leads trained

Sustainability:

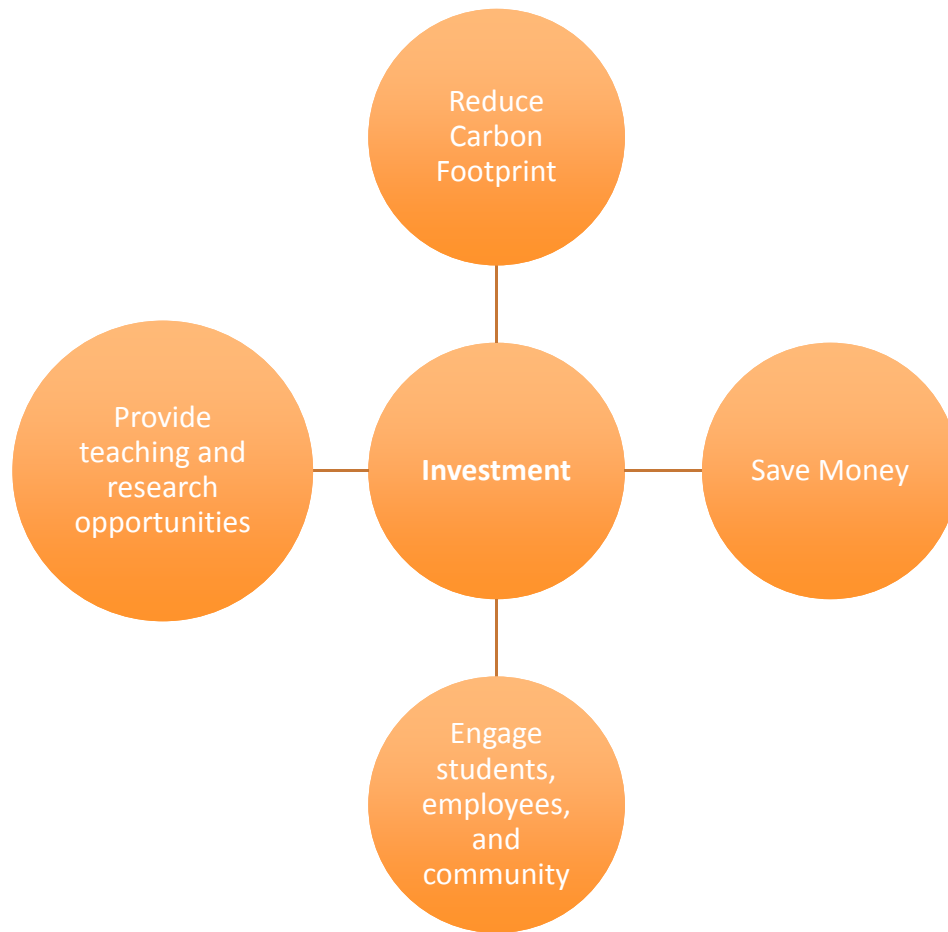
From Passion to Practice to Careers

- Megan Marshall Lane, City of Denver Recycling
- Mariah Shell, Alliance for a Sustainable Colorado
- Stuart Coles, Public Lands Outreach Coordinator, Wilderness Society
- Maddy Torraca Jones, Food Corps, Maine
- Mariah Foley, New Morning Farm
- Sustainability directors at Snooze, DaVita, Aurora Public Schools, Ecoproducts, Fort Lewis College,

INVESTMENT OPPORTUNITIES
UNIVERSITY OF DENVER

Limitations, Opportunities, Overlapping Benefits

- Energy Fund,
 - 5 year ROI on projects is very limiting
 - Budgeting changes, no longer a revolving fund
- Impact Investing
 - Many projects can show a positive ROI
 - Candidates for impact investments
- Creative project management could contain multiple benefits



TO REDUCE CARBON FOOTPRINT, SAVE MONEY, AND PROVIDE TEACHING AND RESEARCH OPPORTUNITIES

Energy

- Projects: Lights, controls, mechanical, solar
- Community: Partnerships with Xcel energy
- Outcomes: Reduced operating cost, great ROI





- Free program for students who rent
- Student assessors check apartment provide energy saving light bulbs, showerheads, and more
- Save \$\$\$ on utilities
- Get FREE ILLEGAL PETES

Water

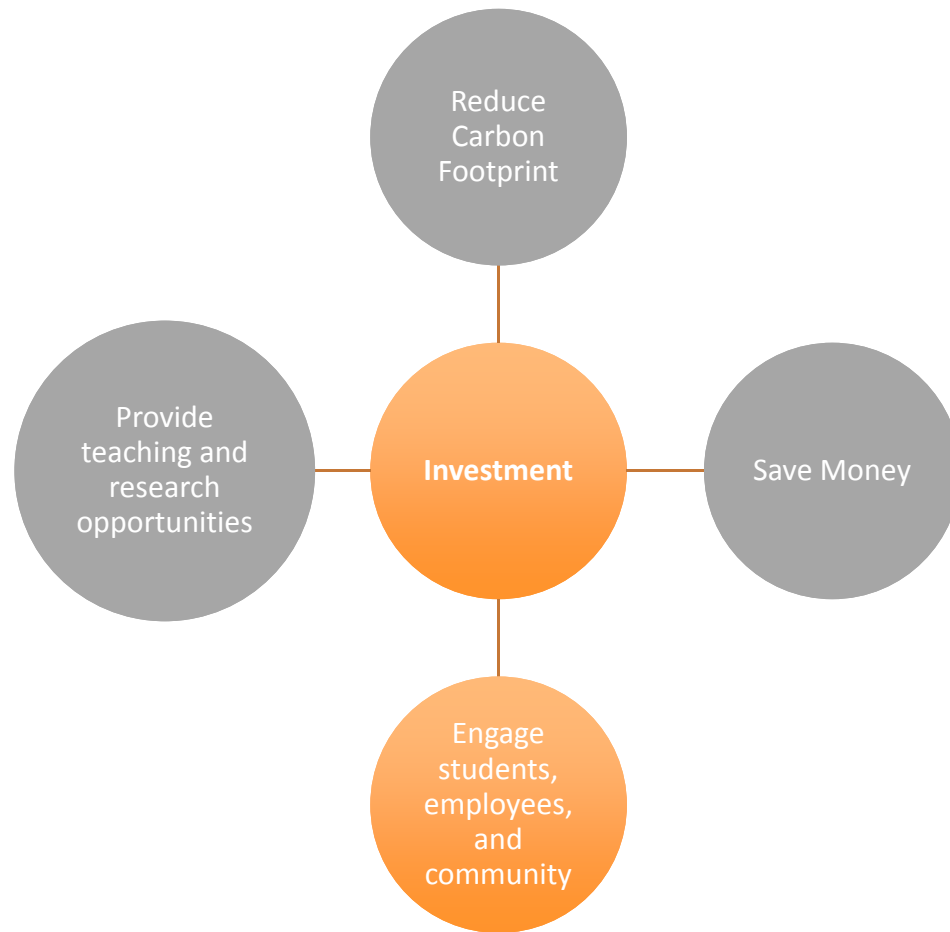
- Projects: Fixtures, landscaping
- Community: Partnerships with Denver Water
- Outcomes: Operating budget savings, demonstration projects for community



Mobility

- Projects: Bike sharing, carshares, carpool, van pool, TNCs
- Partnerships: Enterprise, DPW, Lyft, start up ride sharing technologies
- Outcomes: Reduced facilities operating cost, reduced student out-of-pocket cost, recruitment and visibility





**TO ENGAGE STUDENTS AND
EMPLOYEES**

Waste



- Projects: Bins, collection equipment, sensors, in vessel compost
- Partnerships: City of Denver Waste Management, start up companies
- Outcomes: Cost reduction, improved student and visitor experience, increased diversion rates, contributions to city and regional goals

Food

- Projects: campus gardens, local and direct purchasing, farm to table (dining hall)
- Partnerships: land owner/grower collaborations, food non-profits
- Outcomes: Recruitment, publicity



Examples from other institutions

- UCLA
- PSU
- Northeastern
- Walmart
- Ikea
- Unilever

**FOR FINANCIAL SAVINGS AND
CARBON FOOTPRINT REDUCTIONS**



UCLA creates nation's largest self-replenishing fund for green projects

Savings from new sustainability projects will be rolled over to fund future projects

Allison Hewitt | October 28, 2014

- Creation of a \$15 million self-replenishing fund to support campus sustainability projects, forming the largest fund of its kind in the country.

<http://newsroom.ucla.edu/releases/ucla-creates-nations-largest-self-replenishing-fund-for-green-projects>

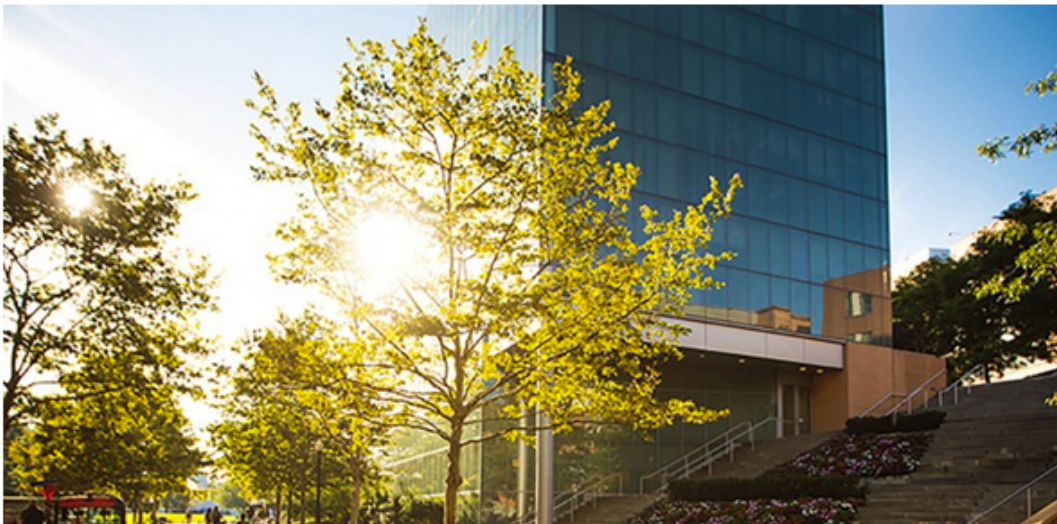
Northeastern

NO COMMENTS

Northeastern to invest \$25 million of endowment funds in environmental sustainability

July 11, 2016 by Joe O'Connell

- The university will direct \$25 million of its endowment to investments with a focus on sustainability, including clean energy, renewables, green building, and sustainable water and agriculture.
- “Today we are furthering this leadership by proactively setting aside a portion of our endowment for investments in sustainable ventures. We have deliberately chosen to *invest*, not divest. This approach is consistent with Northeastern’s character as an institution that actively engages with the world, not one that retreats from global challenges.”



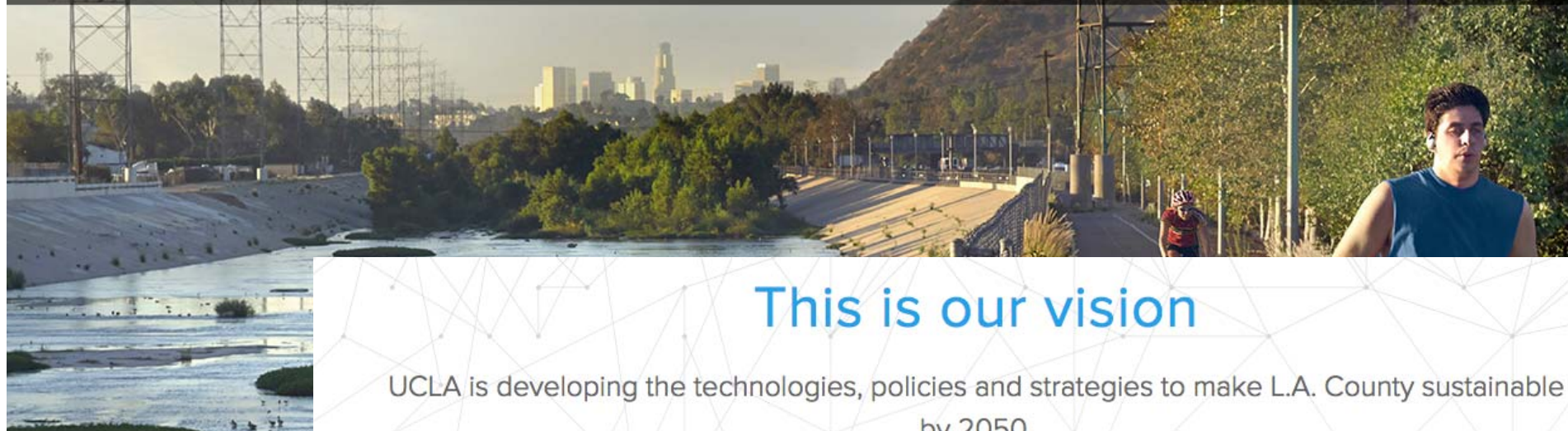
<http://www.northeastern.edu/news/2016/07/northeastern-to-invest-25-million-of-endowment-funds-in-environmental-sustainability/>

Sustainable Endowments Institute

- 2012, SEI found a 28 percent median annual return on investment on GRF projects from reporting institutions inside the report, [Greening the Bottom Line 2012](#).



**AS RESEARCH AND TEACHING
OPPORTUNITIES**



This is our vision

UCLA is developing the technologies, policies and strategies to make L.A. County sustainable by 2050.



100%
renewable energy

LEARN MORE



100%
local water

LEARN MORE



Enhanced
ecosystem health

LEARN MORE

<http://grandchallenges.ucla.edu/sustainable-la/>



Portland State UNIVERSITY

[PSU » Sustainability » About](#)

[Institute for Sustainable
Solutions](#)

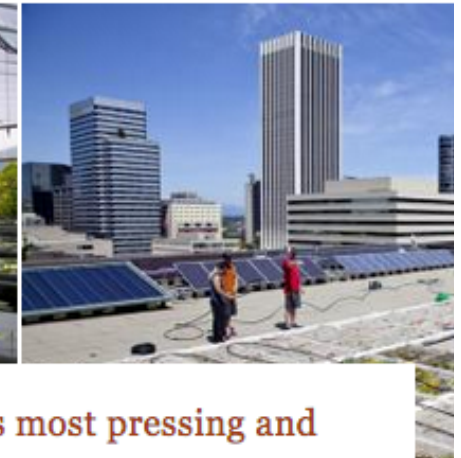
[Campus Sustainability Office](#)

[Student Sustainability Center](#)

[Sustainability Timeline](#)

[Awards & Certifications](#)

About

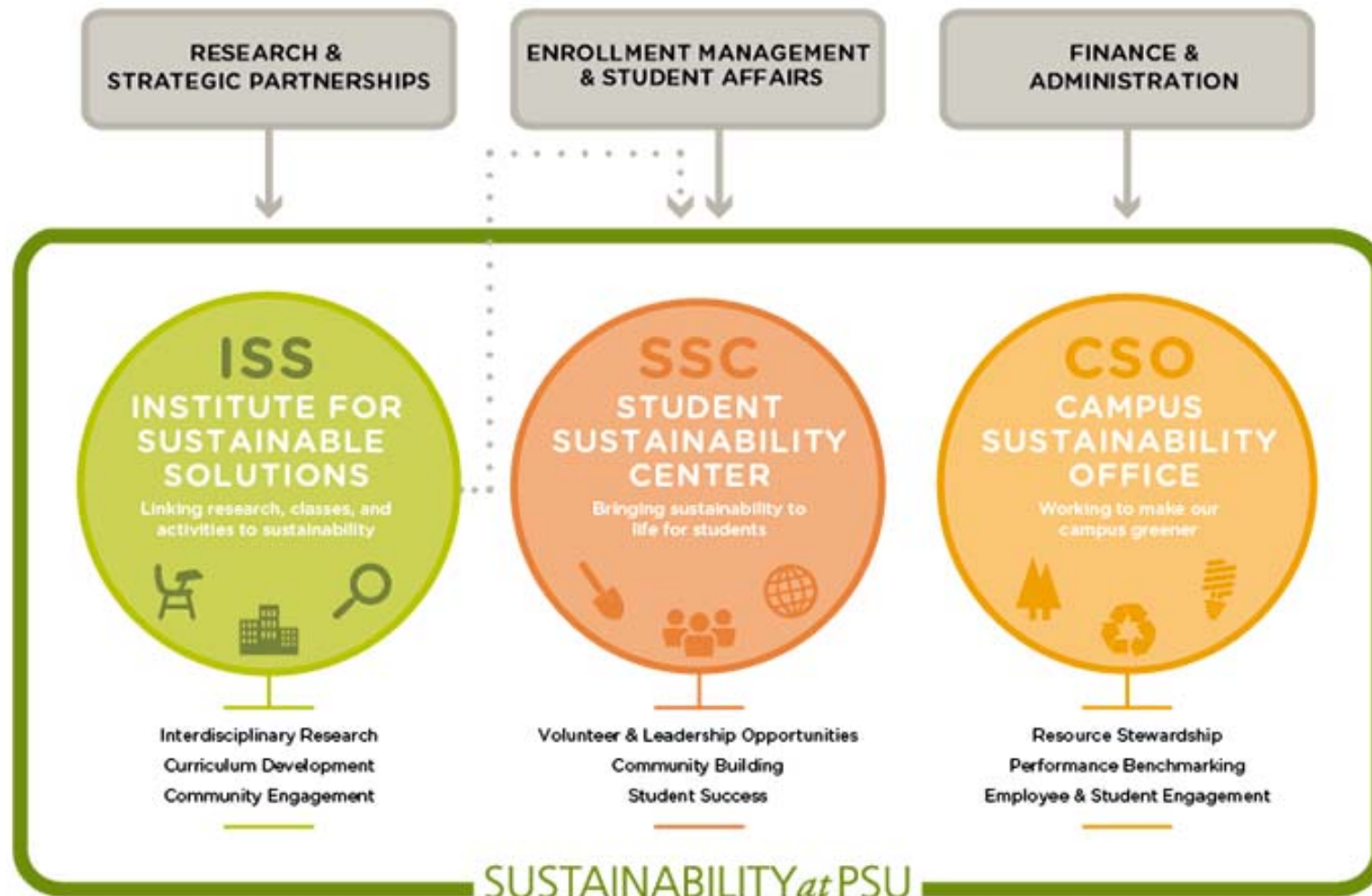


Higher education has the potential to address the world's most pressing and complex challenges through the integrated approach of sustainability.

In 2005, PSU formally adopted a [Declaration of Support for Sustainability](#) that recognized the University's public responsibility to take a leadership role in developing solutions that improve the quality of life for all—both today and in the future. Sustainability became a central part of Portland State's [institutional vision](#), an area of [research enterprise](#), and a key [learning outcome](#) for its students.



Portland State UNIVERSITY



<https://www.pdx.edu/sustainability/about>

**ENGAGE STUDENTS AND
EMPLOYEES**

Sustainability: the secret to recruiting millennials

[g+1](#)[Tweet](#)[Like](#)[Share](#)[Email to a colleague](#)

by HRM | Dec 25, 2013

HRM
AMERICA

REACH
OVER

According to an Oxford Properties study, 60% of workers under 35 believe that in the next 5 years, they will want to work for an employer that is committed to fostering wellbeing, including sustainability. And though the train of corporate environmental responsibility has already left the station, it's not too late to try and catch up if you want to recruit the brightest millennials.



Inc.

Login or s

Why Your Brand Should Appeal to Sustainability-Friendly Millennials

BY MAUREEN KLINE @KLINE_MAUREEN

Metrics show sustainability is catching on fast among consumers, investors, and companies. Don't get left behind.

Walmart



<http://corporate.walmart.com/global-responsibility/sustainability/>



IKEA GROUP **FY15** | **SUSTAINABILITY** **REPORT**

03 | INTRODUCTION

- 04 | ABOUT THE IKEA GROUP**
- 05 | A MESSAGE FROM PETER**
- 06 | A MESSAGE FROM STEVE**
- 07 | THE YEAR IN BRIEF**
- 08 | THE IKEA GROUP PEOPLE & PLANET POSITIVE STRATEGY**
- 09 | GOING ALL-IN TO TACKLE CLIMATE CHANGE**

11 | A MORE SUSTAINABLE LIFE AT HOME

- 12 | PRODUCTS AND SOLUTIONS**
- 20 | INSPIRING MORE SUSTAINABLE LIVING**

22 | RESOURCE AND ENERGY INDEPENDENCE

- 23 | RESPONSIBLE SOURCING**
- 32 | MORE SUSTAINABLE PRODUCTS**
- 36 | MORE SUSTAINABLE OPERATIONS**
- 48 | ENERGY AND WATER IN OUR SUPPLY CHAIN**

52 | BETTER LIFE FOR PEOPLE & COMMUNITIES

- 53 | BETTER LIVES FOR OUR CO-WORKERS**
- 60 | BETTER LIVES FOR WORKERS IN OUR SUPPLY CHAIN**
- 70 | SUPPORTING HUMAN RIGHTS**
- 77 | LASTING CHANGES FOR COMMUNITIES**

82 | GOVERNANCE AND ETHICS

- 83 | HOW WE WORK**
- 84 | SUSTAINABILITY GOVERNANCE AND MANAGEMENT**
- 85 | BUSINESS ETHICS**
- 86 | PUBLIC POLICY**
- 87 | ABOUT OUR REPORTING**

92 | PERFORMANCE AGAINST TARGETS





The Unilever Sustainable Living Plan



Improving Health and Well-being

By 2020 we will help more than a billion people take action to improve their health and hygiene.



Reducing Environmental Impact

By 2030 our goal is to halve the environmental footprint of the making and use of our products as we grow our business.



Enhancing Livelihoods

By 2020 we will enhance the livelihoods of millions of people as we grow our business.



LUX



Dove



<https://www.unilever.com/sustainable-living/>

Investment and Ratings

- Investment in our future
- Provides fundraising opportunities
- Provides multiple benefits
- Improved national ratings and publicity
 - Princeton Review and Sierra Club

Investment in a Just and Sustainable Future

- Builds on our vision and strengths
- Provides experiential, engaged scholarship
- Places DU as a regional leader
- Transformative community building in Denver

