

# Company Towns

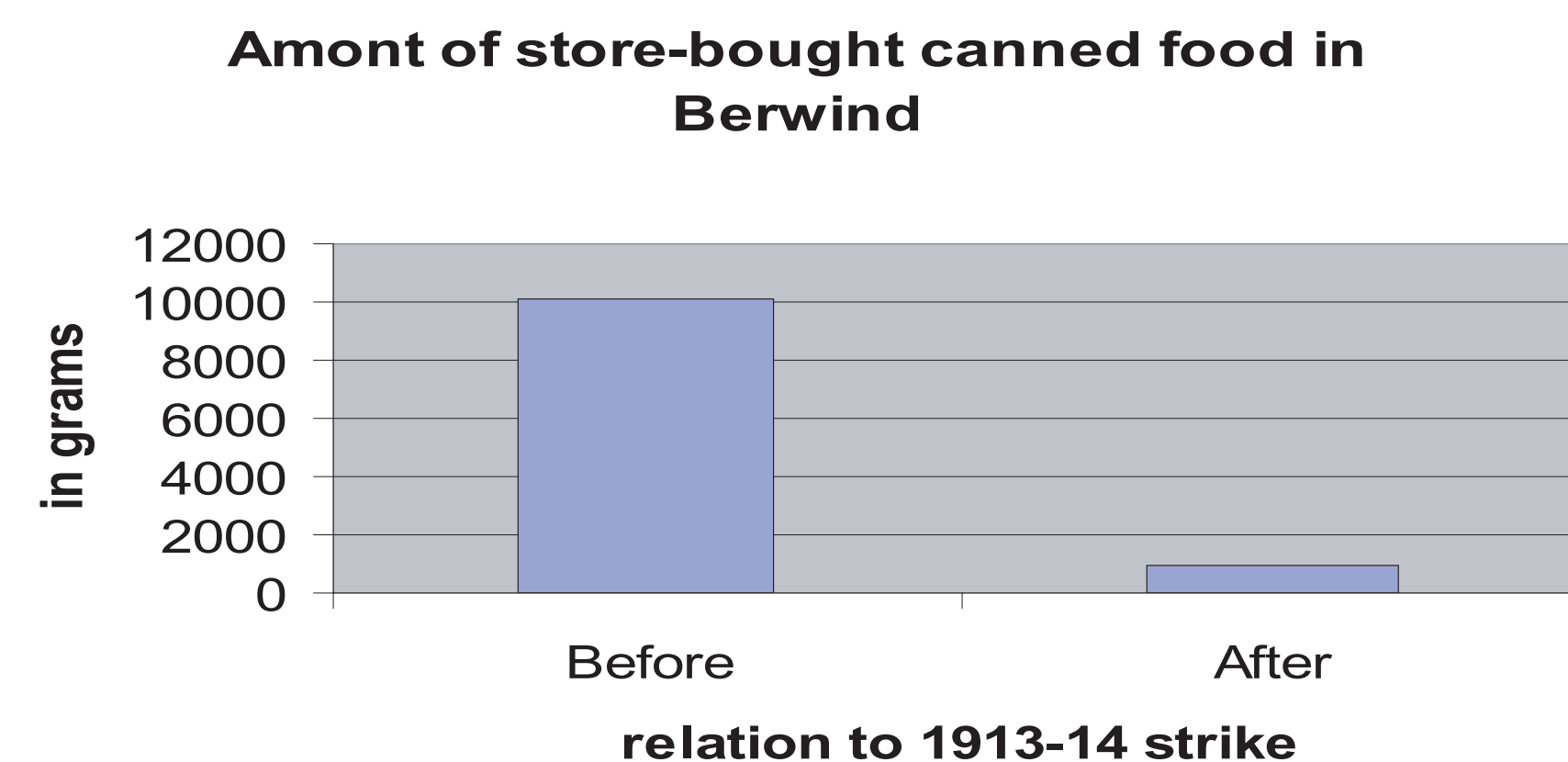
Archaeologists uncovered the original tent colony.

Company towns were found throughout the coal producing areas of southern Colorado.

These towns were located up Berwind and Del Agua Canyons to the west of the Ludlow tent colony. When miners elected to strike against Colorado Fuel and Iron (CF&I), they were evicted from their homes. Many of the inhabitants of the Ludlow tent colony came from these company-owned towns.



Overview of Berwind

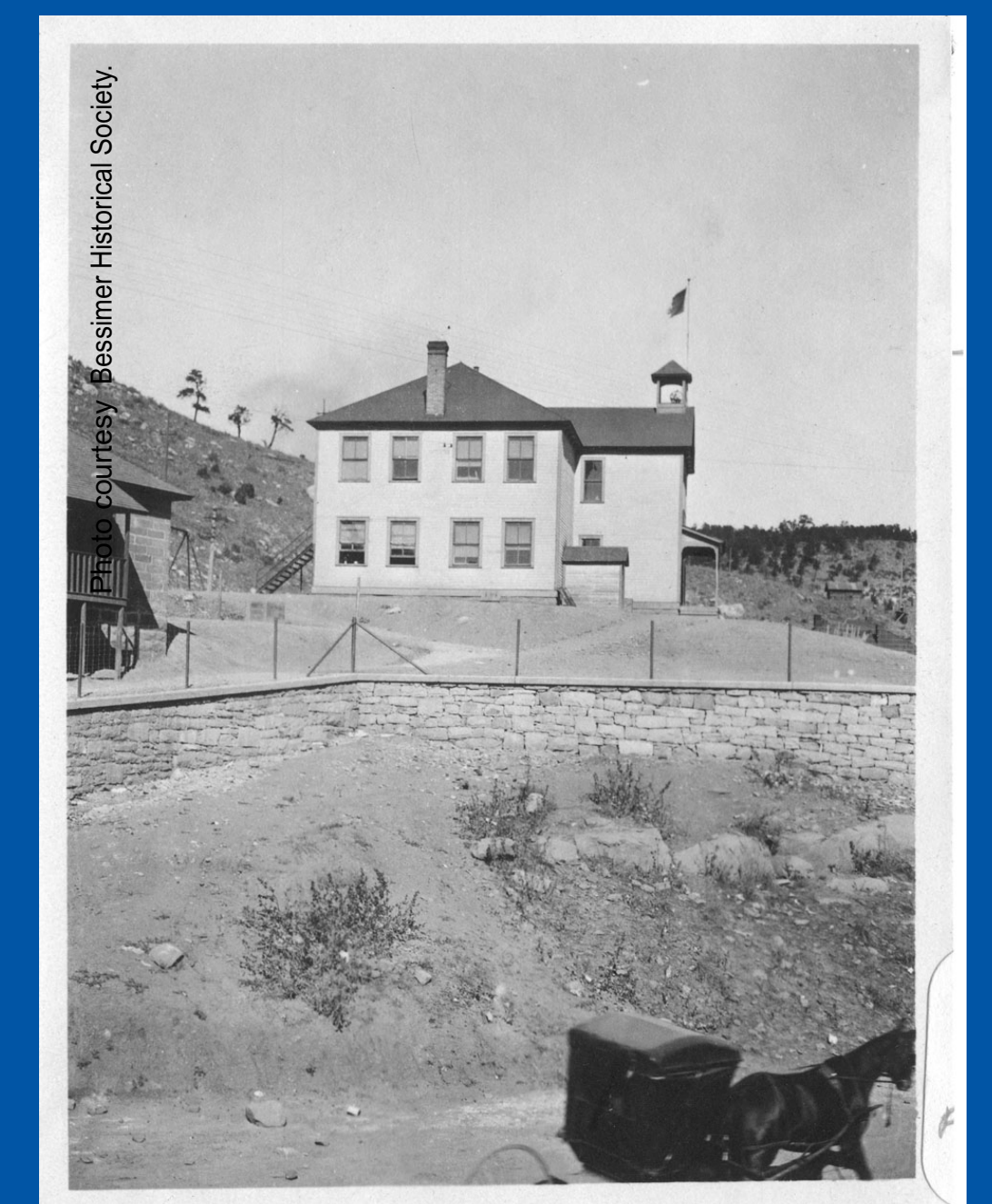


Despite changes made by the company after the strike, families continued to struggle in the company towns.

This struggle is seen in evidence of home canning and small game trapping to supplement meals that show up in the archaeology. These troubles continued to fuel strikes in the 1920s.

The miners often lived in company-owned towns near the mines that they worked.

The company provided all the goods and services a miner and his family would need because of the isolated locations. Miners were often forced to buy their provisions at company stores, live in company houses, and send their children to company schools. Entries to the towns were usually gated and patrolled by armed guards.



Berwind school October 1915