

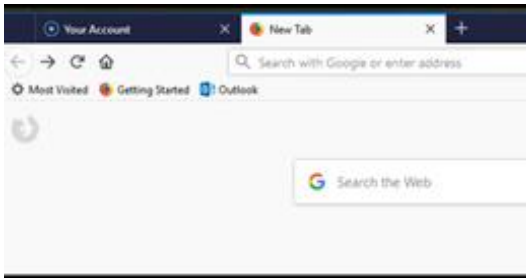
## Installing R and RCmdr in your system

This handout follows the instructions presented in the video: [Installing R and R Commander](#). In order to follow the installation directions, you need to have access to the internet. Make sure you have access before getting started.

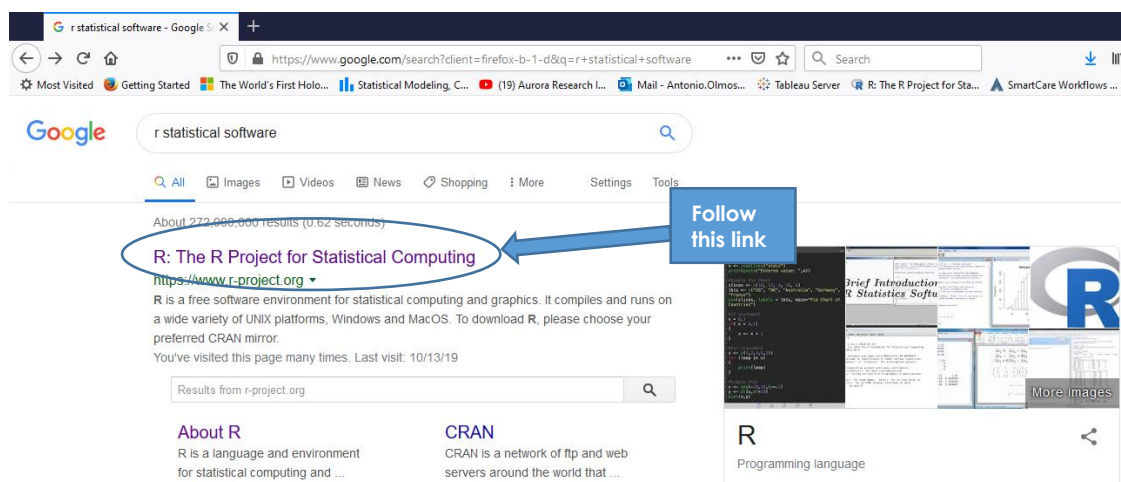
There are versions of R and R-commander for Windows 10, Mac and Linux systems. It is highly recommended that you run any updates in your system before you start the installation of R. This precaution will guarantee that your system has any upgrades it needs.

### 1. - Open your browser

I use Mozilla firefox, but any internet browser will do.



The easiest way to find the site is to try: "r statistical software" in your search engine (I use Google)



Usually the site we are trying to find will be the first hit ("The R project for Statistical computing"). Once found, go to the R statistical project website

The R Project for Statistical Computing

## Getting Started

R is a free software environment for statistical computing and graphics. It compiles and runs on a wide variety of UNIX platforms, Windows and MacOS. To [download R](#), please choose your preferred CRAN mirror.

If you have questions about R like how to download and install the software, or what the license terms are, please read our [answers to frequently asked questions](#) before you send an email.

## News

- [R version 3.6.1 \(Action of the Toes\)](#) has been released on 2019-07-05.
- useR! 2020 will take place in St. Louis, Missouri, USA.
- [R version 3.5.3 \(Great Truth\)](#) has been released on 2019-03-11.
- The R Foundation Conference Committee has released a [call for proposals](#) to host useR! 2020 in North America.
- You can now support the R Foundation with a renewable subscription as a [supporting member](#)
- The R Foundation has been awarded the Personality/Organization of the year 2018 award by the professional association of German market and social researchers.

## News via Twitter

The R Foundation Retweeted

Notice that in this page, there is a link to download the program. Please click on that link. And a new page with more information will open. In this new page, click on one of the links (I tend to go with the top one, as you can see)

CRAN Mirrors

The Comprehensive R Archive Network is available at the following URLs, please choose a location close to you. Some statistics on the status of the mirrors can be found here:

If you want to host a new mirror at your institution, please have a look at the [CRAN Mirror HOWTO](#).

0-Cloud  
<https://cloud.r-project.org/>

Algeria  
<https://cran.usfob.az/>

Argentina  
<http://mirror.fcaglp.unlp.edu.ar/CRAN/>

Australia  
<https://cran.csiro.au/>  
<https://mirror.aarnet.edu.au/pub/CRAN/>  
<https://cran.ms.unimelb.edu.au/>  
<https://cran.curtin.edu.au/>

Austria  
<https://cran.wu.ac.at/>

Belgium  
<https://www.freeststatistics.org/cran/>  
<https://lib.ugent.be/CRAN/>

Brazil

Automatic redirection to servers worldwide, currently sponsored by Rstudio

University of Science and Technology Houari Boumediene

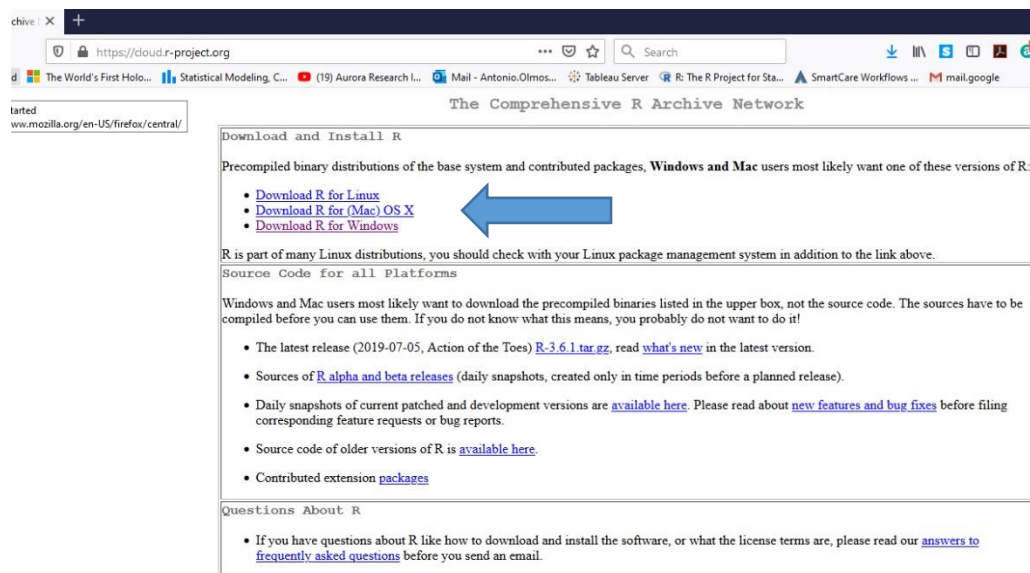
Universidad Nacional de La Plata

CSIRO  
AARNET  
School of Mathematics and Statistics, University of Melbourne  
Curtin University of Technology

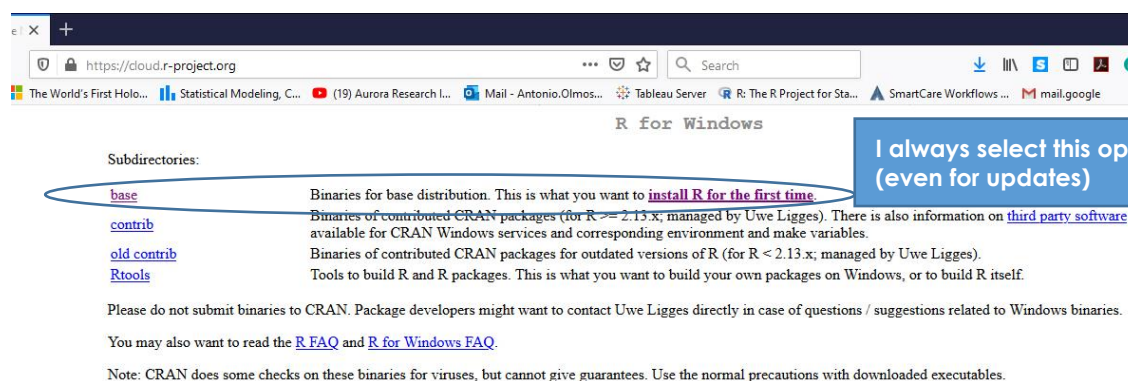
Wirtschaftsuniversität Wien

Patrick Wessa  
Ghent University Library

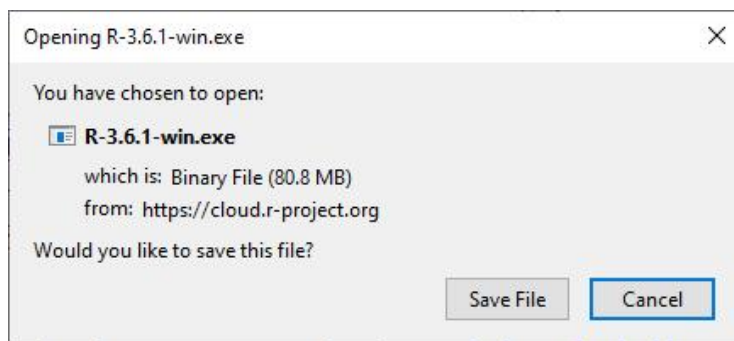
As stated earlier, there are several options: Windows, Mac, and Linux. Download what is appropriate for your system.



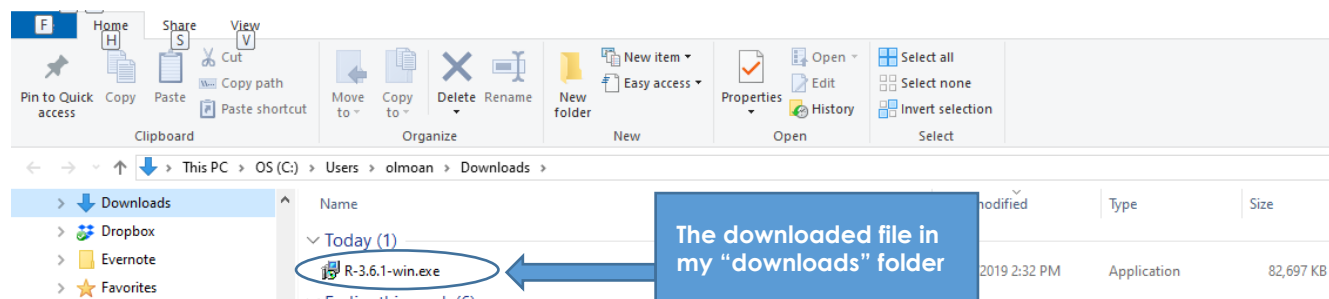
Chose "base" installation for the first time (I always select that option, even when I am doing an update to a newer version)



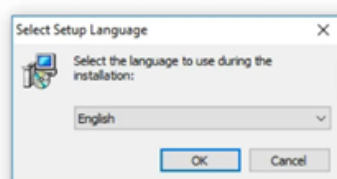
Accept and download. If everything is well, you'll see the following window (or something very similar):



Save the file. You should find your file in your default download folder:



Start installation by double-clicking on the file. You get this screen:



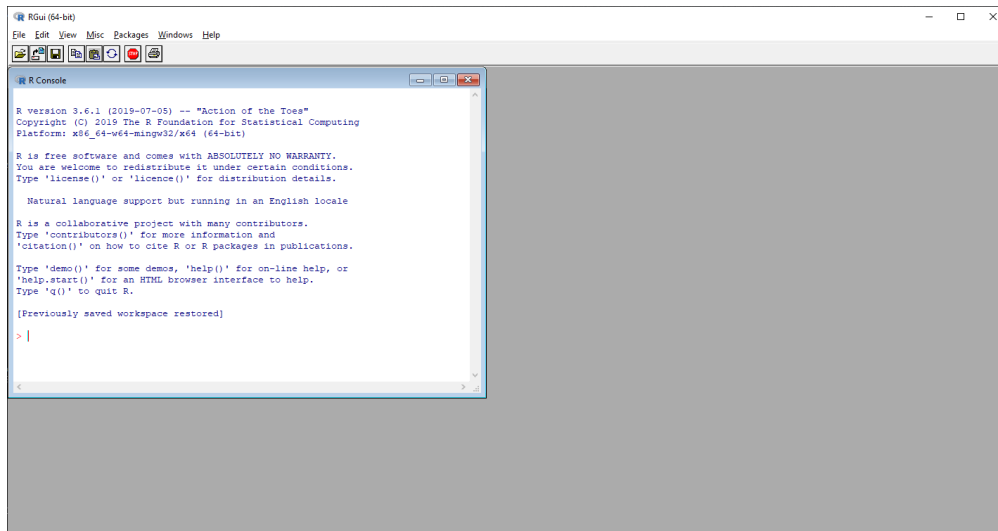
You can change the language used during the installation. Once the installation finishes, you will see this screen:



If you used all of the defaults, you should now have an icon like this in your desktop:

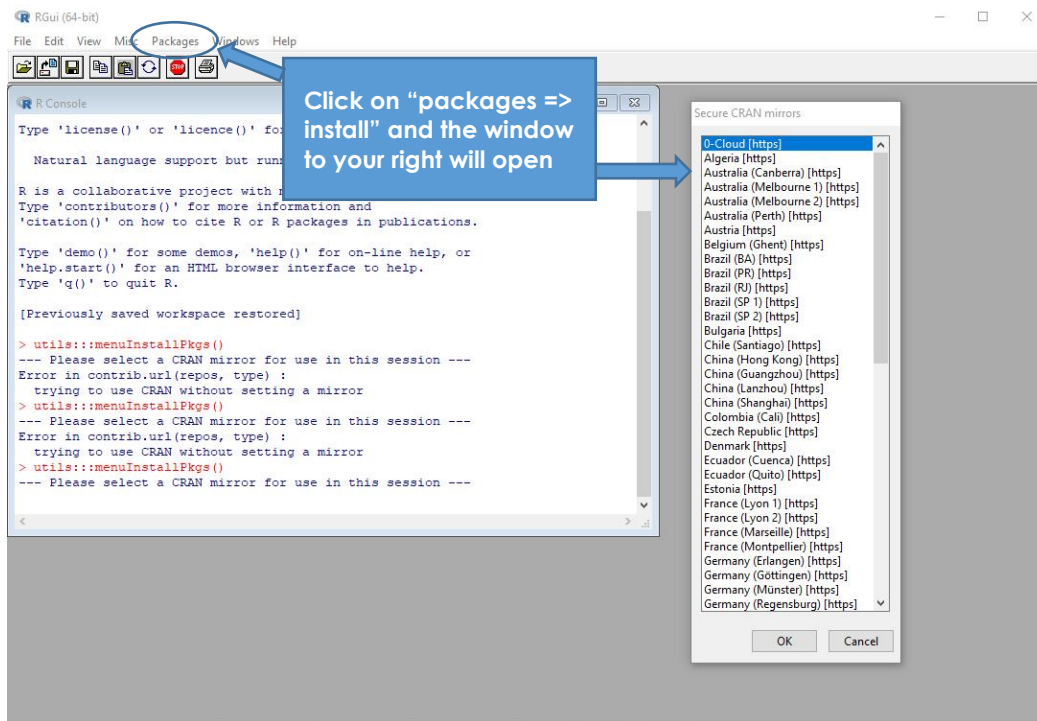


When you open the program by double-clicking on the icon, you get this screen:



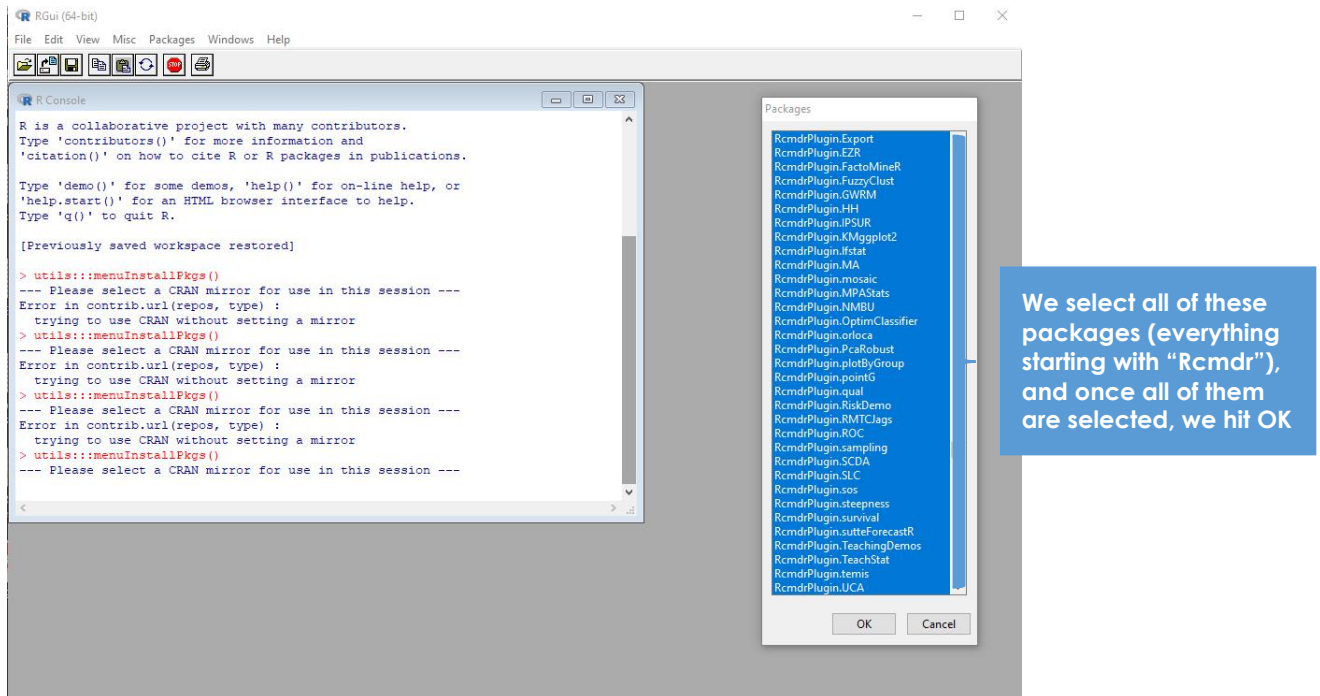
## 2. - R-commander (Rcmdr)

The first thing we are going to do to run R-commander is to install it. R-Commander is not part of the default installation. It needs to be installed. To install R-commander (or any other package), we click on packages, and install. We get the following screen

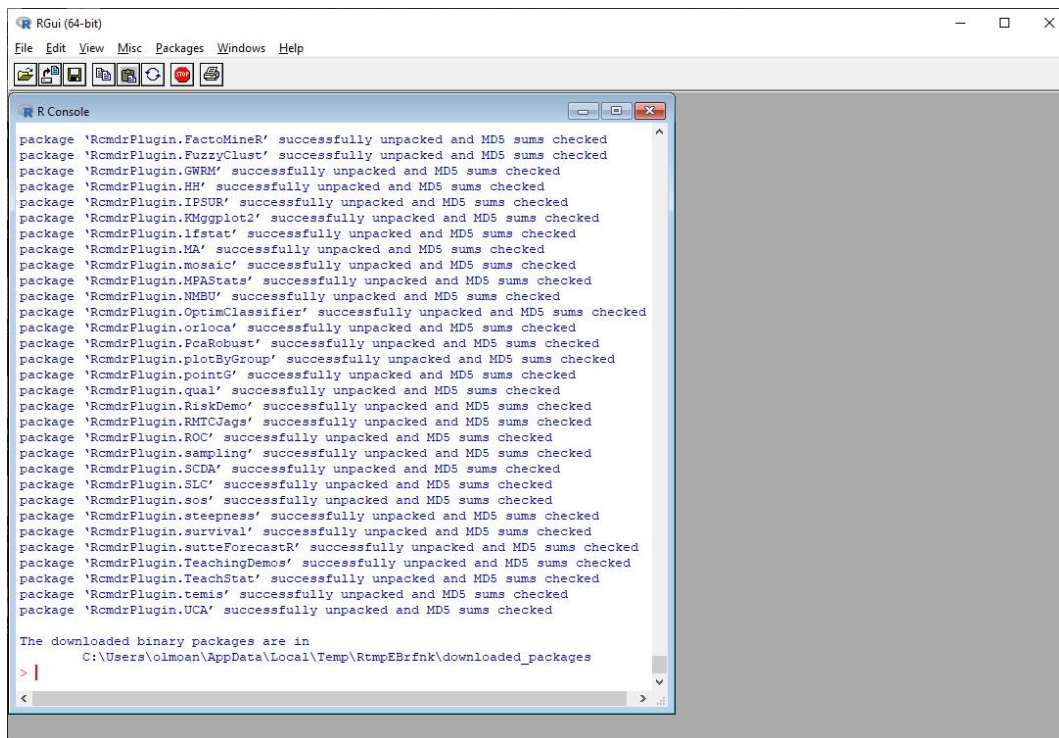








The packages will start loading. Dependent on the speed of your computer, this may take from a few seconds to a few minutes. When it ends, the screen will look like this:



After all the packages are installed, type "library("Rcmdr")" in the main console:

```

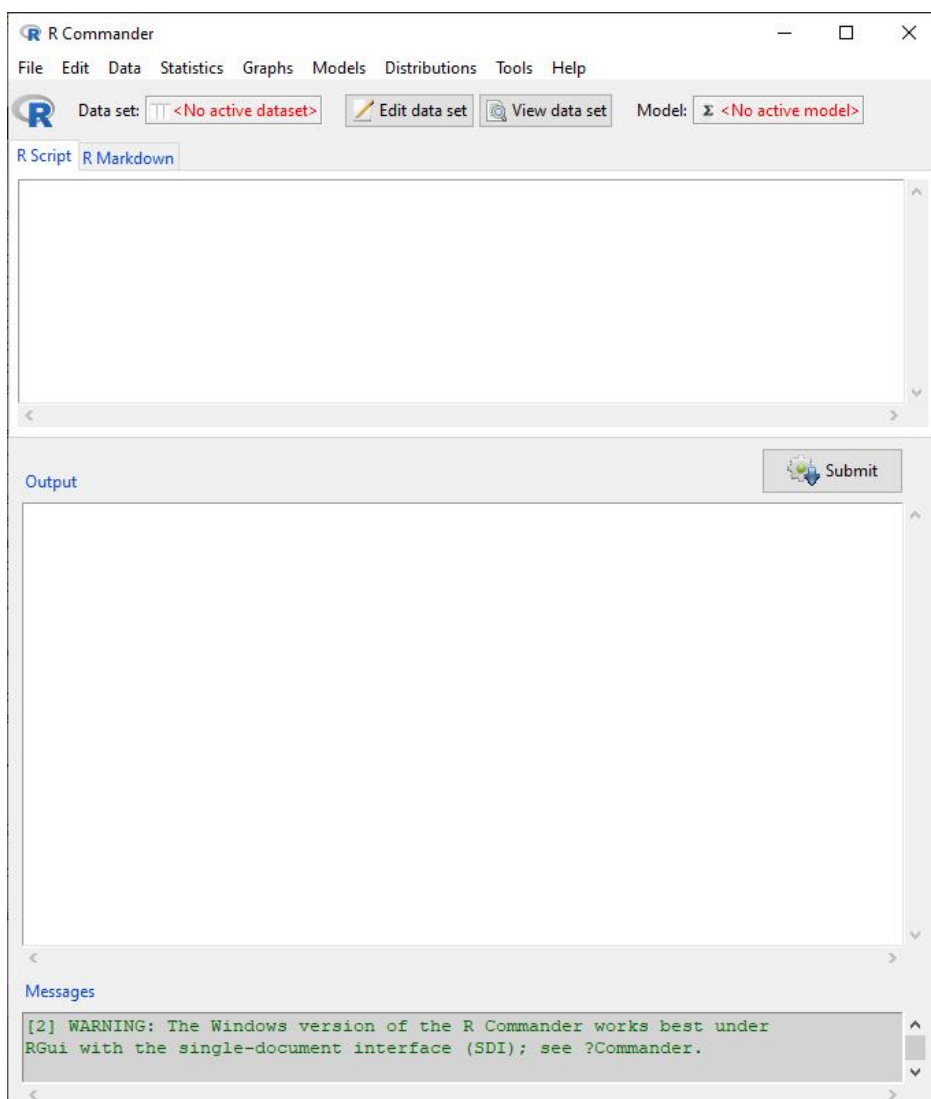
package 'RcmdrPlugin.steepness' successfully unpacked and MD5 sums checked
package 'RcmdrPlugin.survival' successfully unpacked and MD5 sums checked
package 'RcmdrPlugin.sutteForecastR' successfully unpacked and MD5 sums checked
package 'RcmdrPlugin.TeachingDemos' successfully unpacked and MD5 sums checked
package 'RcmdrPlugin.TeachStat' successfully unpacked and MD5 sums checked
package 'RcmdrPlugin.temis' successfully unpacked and MD5 sums checked
package 'RcmdrPlugin.UCA' successfully unpacked and MD5 sums checked

The downloaded binary packages are in
  C:\Users\olmoan\AppData\Local\Temp\RtmpEBrfnk\downloaded_packages
> library("Rcmdr")

```

Type:  
library("Rcmdr")

If after you enter this command, you get some warning about needing to install further packages, just hit enter, and let the computer install whatever is missing. After it finishes you will get a screen that will look like this:

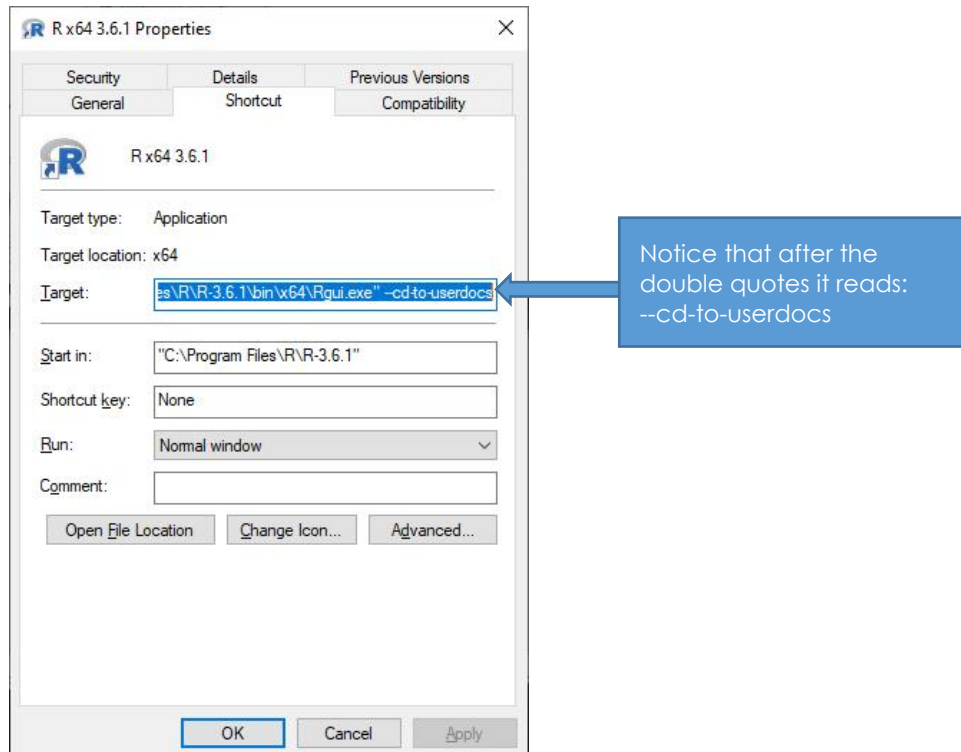




Notice that at the bottom, there is a warning:



To remove this warning, you need to change the properties of the icon, so it runs in a different environment. The icon will have as "target" `""C:\Program Files\R\R-3.6.1\bin\x64\Rgui.exe" --cd-to-userdocs"`

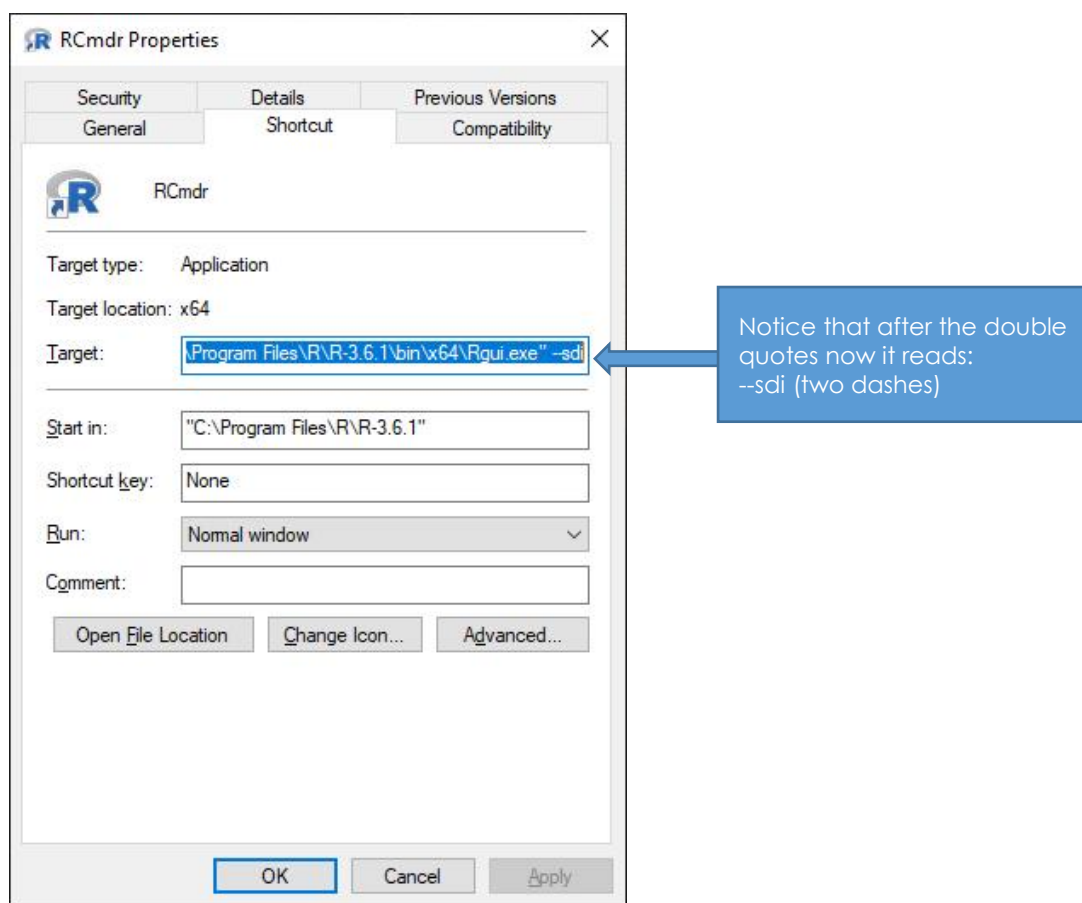


The best solution, is to create a new icon, and change the target. I named this new icon: "Rcmdr"

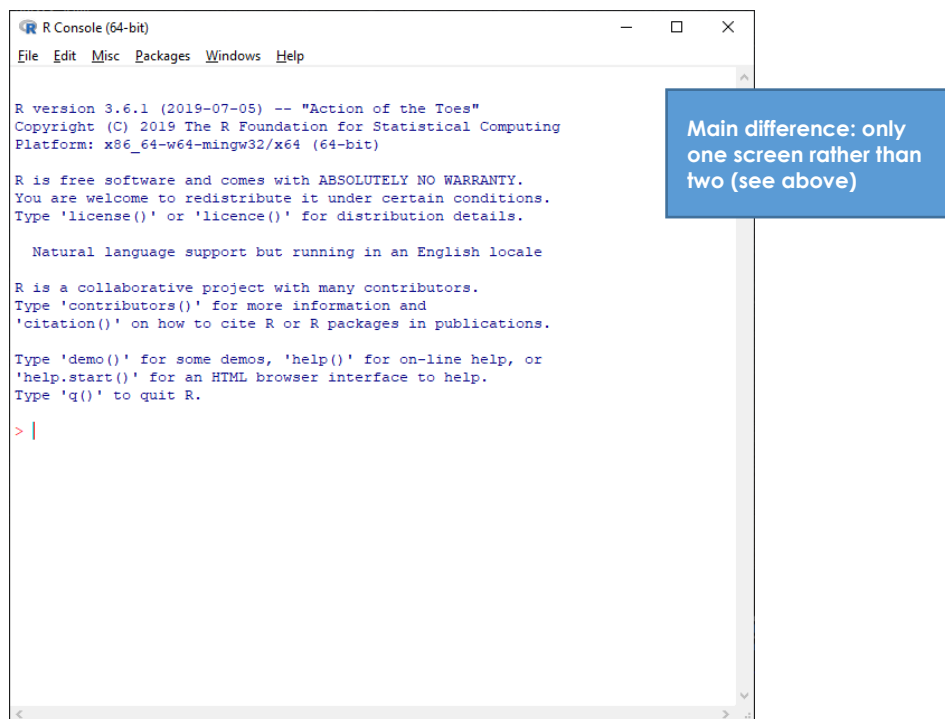


And I changed the Target in the properties to the following

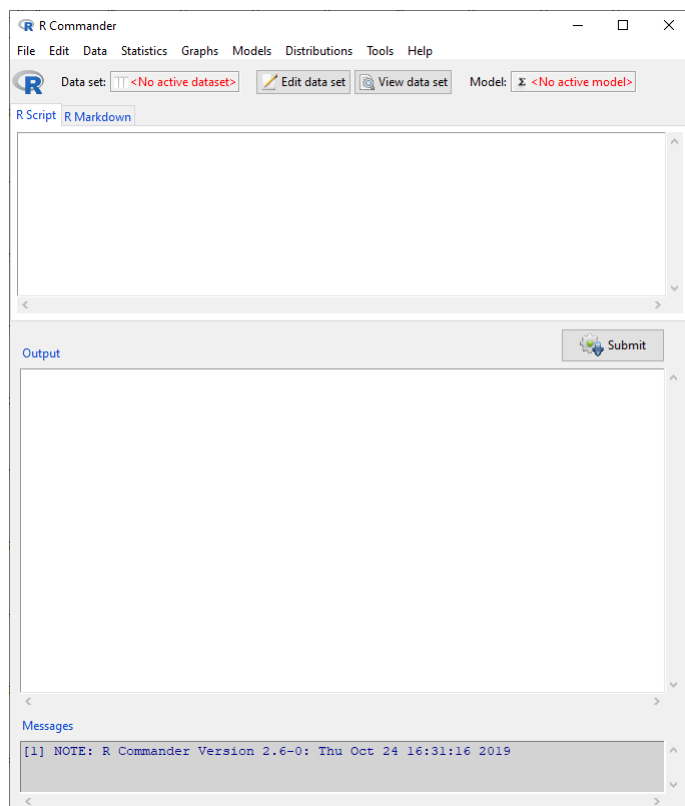
"C:\Program Files\R\R-3.6.1\bin\x64\Rgui.exe" --sdi Please note that there are two dashes "--" before "sdi". See below:



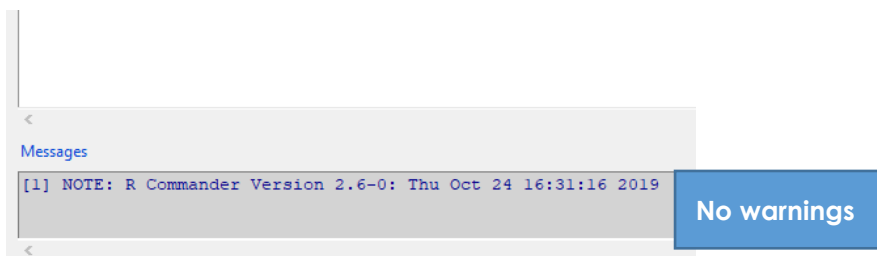
When you click on this new icon, the program opens and looks like this:



Once you type “library(“Rcmdr”) in this new version of the program you get the following screen:



Notice that at the bottom of the program, there are no longer warnings:



### 3. - Your computer is ready to run R-commander. Explore!

You can now start using R-commander. Explore the menus at the top. You'll notice that it is menu-based (i.e., like SPSS windows), rather than command-based (i.e., like the old SPSS with syntax)

